



# INSTRUCTION BULLETIN

No. 340818  
Machine: M20  
Published: 04-2012  
Rev. 01

**NOTE: DO NOT DISCARD the Parts List from the Instruction Bulletin. Place the Parts List in the appropriate place in the machine manual for future reference. Retaining the Parts List will make it easier to reorder individual parts and will save the cost of ordering an entire kit.**

*NOTE: Numbers in parenthesis ( ) are reference numbers for parts listed in Bill of Materials.*

Installation instructions for **kit number 9001338**

## SYNOPSIS:

This kit contains the parts needed to install a rear squeegee protector on M20 machines. Please follow step-by-step instructions.

## SPECIAL TOOLS / CONSIDERATIONS: NONE

(Estimated time to complete: 3/4 hour)

## PREPARATION:

1. Park the machine on a clean level surface, turn off the machine, remove the key, and set the parking brake.

**FOR SAFETY: Before leaving or servicing machine, stop on level surface, set parking brake, turn off machine, and remove key.**

## INSTALLATION:

1. Remove the rubber wheels from each side of the hopper bumper. Set the removed wheels and hardware aside. Refer to Fig. 1.

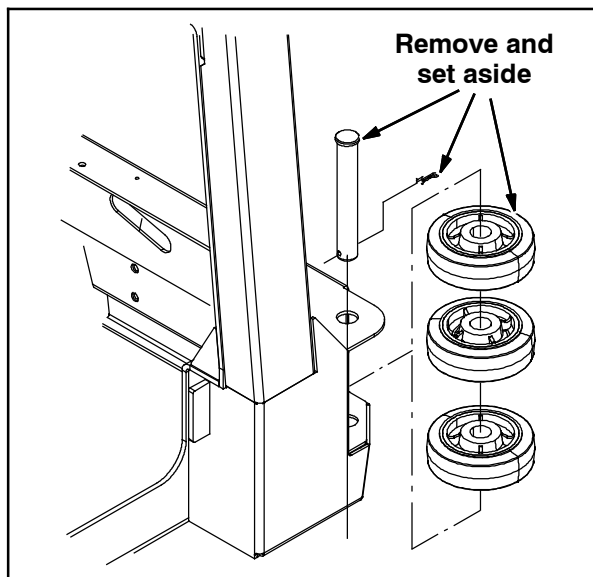


FIG. 1

2. Use two hex screws (14) and two flat washers (3) to mount each squeegee guard (13) onto the machine. Refer to Fig. 2 and Fig. 8.

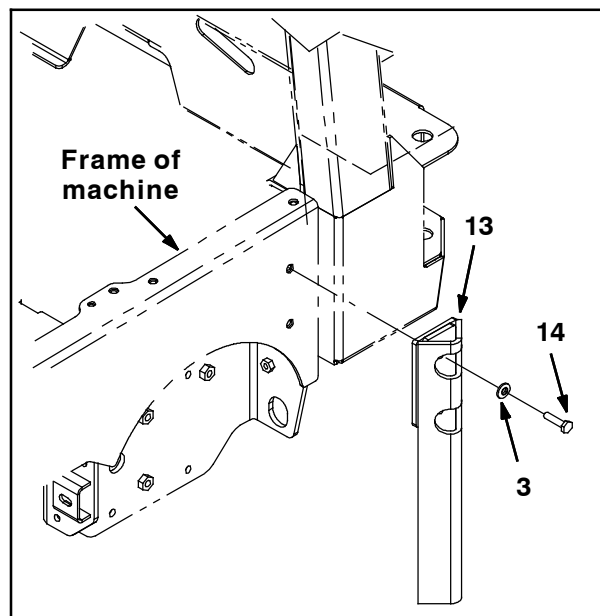
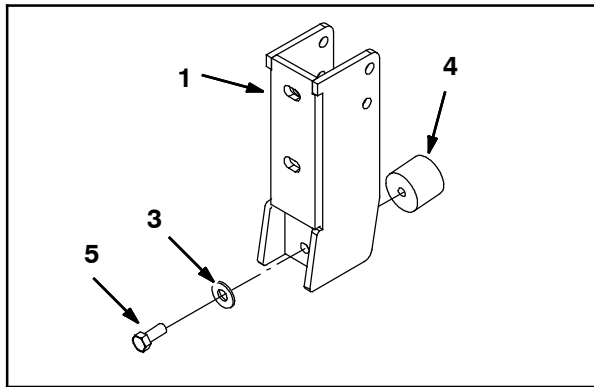


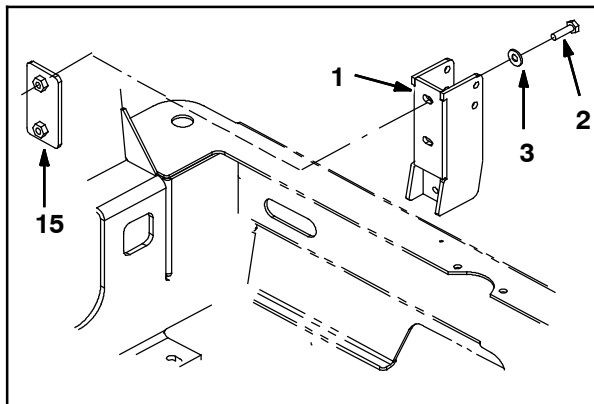
FIG. 2

- Use a hex screw (5) and a flat washer (3) to install a bumper (4) onto each squeegee guard bracket (1). Refer to Fig. 3 and Fig. 8.



**FIG. 3**

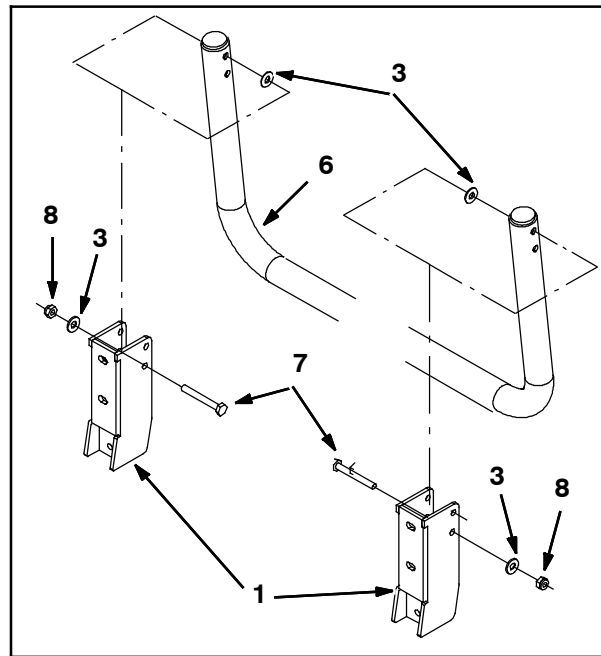
- Slide the mounting plate (15) into the hole in the hopper bumper where the rubber wheels were located, align the mounting plate with the mounting holes in the hopper bumper, and use two hex screws (2), two flat washers (3), and a mounting plate to install squeegee guard bracket (1) to the frame of the machine. Repeat this step to install the other squeegee guard bracket onto the machine. Refer to Fig. 4 and Fig. 8.



**FIG. 4**

- Reinstall all parts removed from the hopper bumper at the beginning of the procedure. Refer to Fig. 1.

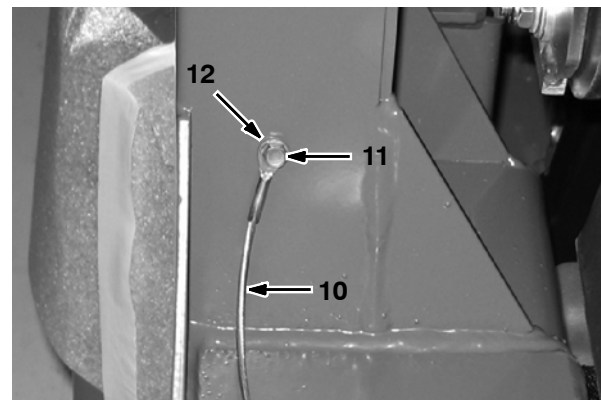
- Use two hex screws (7), four flat washers (3), and two hex nuts (8) to install the rear squeegee guard (6) onto the squeegee guard brackets (1). Refer to Fig. 5 and Fig. 8.



**FIG. 5**

- Install the hitch pin (9) ring onto the 12" cable (10).

- Use a forming hex screw (11) and a flat washer (12) to install the 12" cable (10) onto the hopper. Refer to Fig. 6, Fig. 7, and Fig. 8.



**FIG. 6**

9. **Engage the rear squeegee protector:** Pull the pin (9) from the squeegee guard bracket (1) and rear squeegee guard (6), lower the rear squeegee guard, and reinsert the pin into the squeegee guard bracket. Refer to Fig. 7.

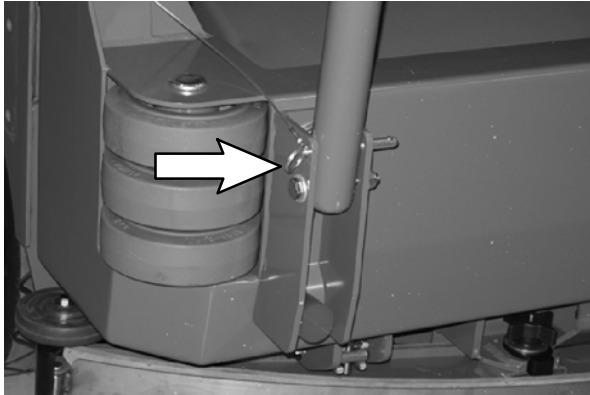


FIG. 7

10. **Disengage the rear squeegee protector:** Pull the pin from the squeegee guard bracket (1), lift the rear squeegee guard (6), and reinsert the pin into the squeegee guard bracket and the rear squeegee guard. Refer to Fig. 7.

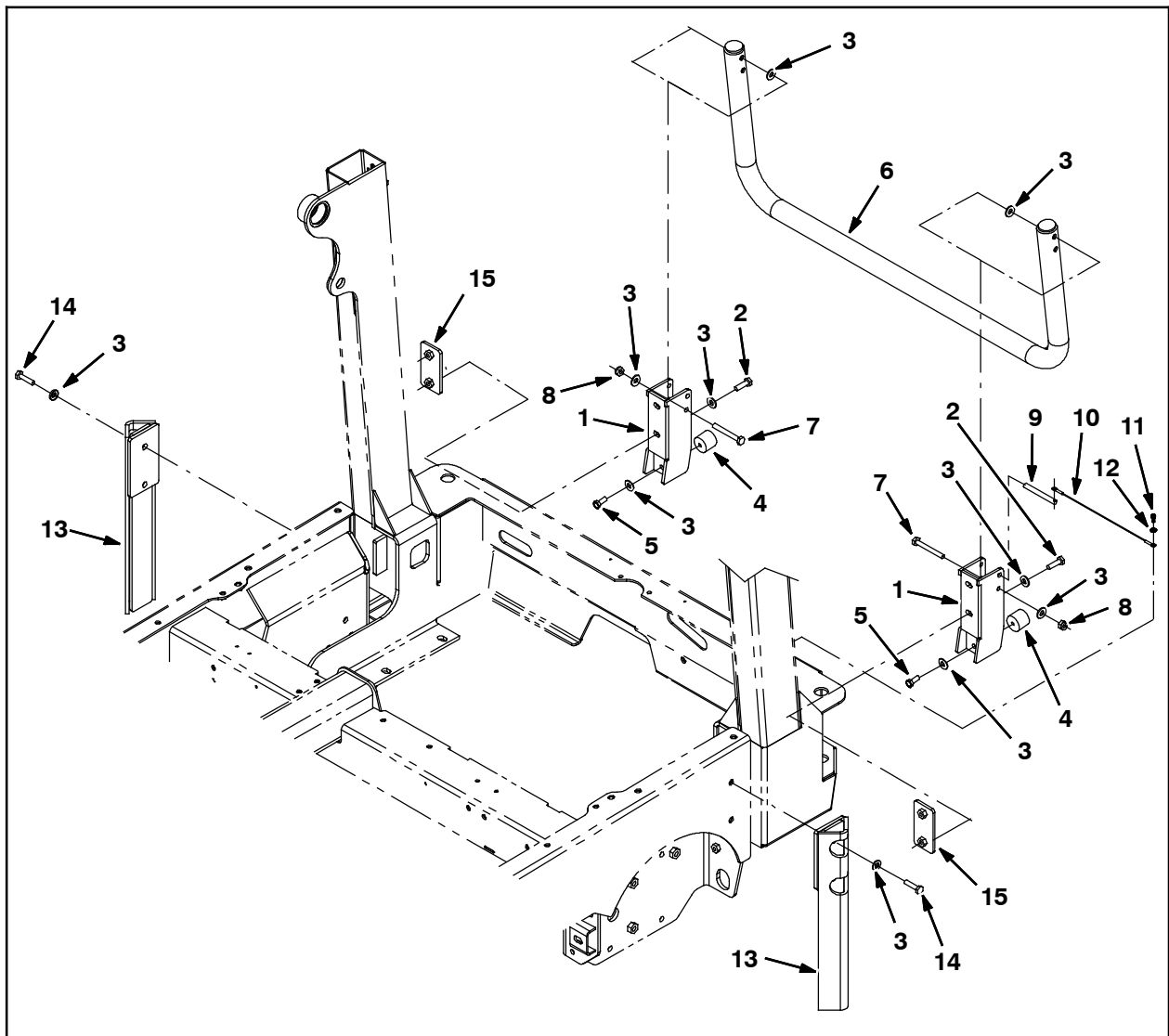


FIG. 8

**Bill of Materials for Guard Kit, Sqge, CI [M20]-9001338**

<b>Ref.</b>	<b>Tennant Part No.</b>	<b>Description</b>	<b>Qty.</b>
▽	9001338	Guard Kit, Sqge, CI [M20]	1
▲	1 1027560	Bracket Wldt, Guard, Sqge	2
▲	2 39284	Screw, Hex, M10 X 1.5 X 35, 8.8	4
▲	3 32492	Washer, Flat, 0.38, Std	10
▲	4 1024977	Bumper, Ure, 1.50D 1.25L	2
▲	5 21196	Screw, Hex, .38-16 X 0.88, G5	2
▲	6 1056195	Guard Wldt, Pntd, [M20 / T20]	1
▲	7 06965	Screw, Hex, M10 X 1.5 X 80, 8.8	2
▲	8 41430	Nut, Hex, Lock, M10 X 1.5, NL	2
▲	9 369359	Pin, Hitch, .375D X 3.12L, PL	1
▲	10 57702	Cable, Glv, .06D 012.0L .26Eye/.26Eye	1
▲	11 55845	Screw, Hex, M5 X 0.8 X 16, Fmg	1
▲	12 01683	Washer, Flat, #10, SS	1
▲	13 1045444	Guard Wldt, Sqge	2
▲	14 39285	Screw, Hex, M10 X 1.5 X 40, 8.8	4
▲	15 1029543	Plate, Mtg	2
▲	16 41187	Washer, Flat, Belleville, .38	4

TENNANT COMPANY  
P. O. Box 1452  
Minneapolis, MN 55440-1452